

JET COOLER (COLD AIR GENERATOR)

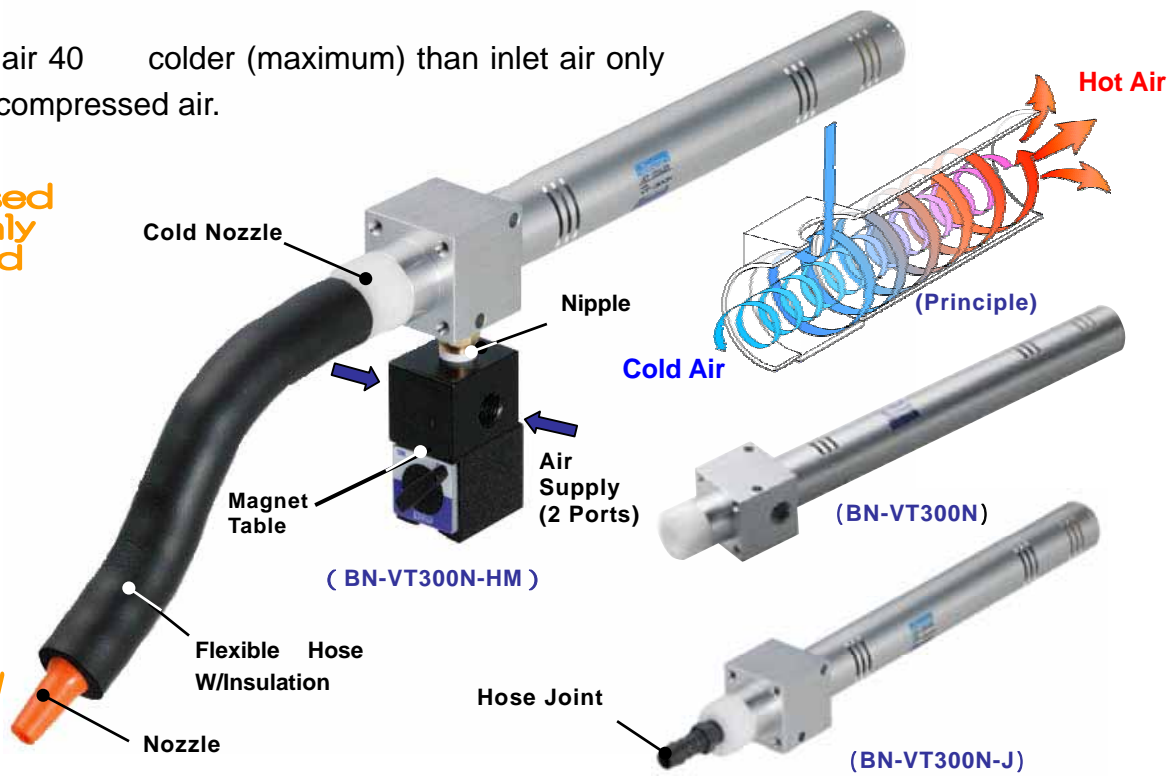
Jets out cold air 40 °C colder (maximum) than inlet air only by supplying compressed air.

Compressed Air Is Only Required

No Electricity

Long Life

User-Friendly



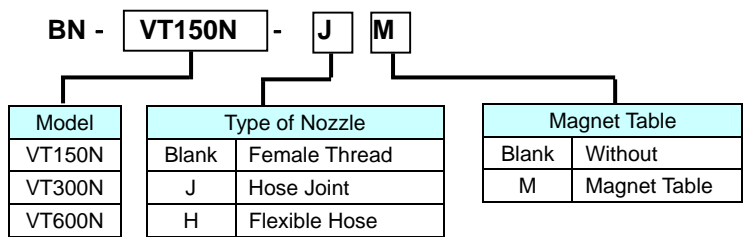
Features / Principle

Jet cooler is a cold air generator, applying a principle of swirling theory, which does not have any moving parts. Without need of refrigerant or electricity, the jet cooler whirls compressed air inside the tube at high speed and then separates it into hot air and cold air. The generated cold air is readily used for spot cooling in many fields.

Applications

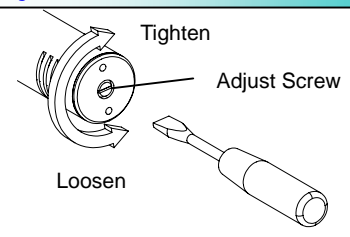
- Cooling Soldering
- Cooling Electrical Cabinet
- Cooling Sewing Needles
- Fortifying Electric Wire
- Cooling Plastic Processing
- Cooling CCTV Cameras
- Cooling Spot Welding
- Cooling Molded Parts

Order Example



* Flexible hose is composed of a nozzle, hose, connector and insulation.
 * Magnet Table comes with a nipple for connecting jet cooler and blind plug.

Adjustment of Cold Air



Adjust the cold air temperature with the adjust screw at the end. Loosen it to lower the temperature and to decrease the generated air amount. Tighten it to raise the temperature and to increase the generated air amount.

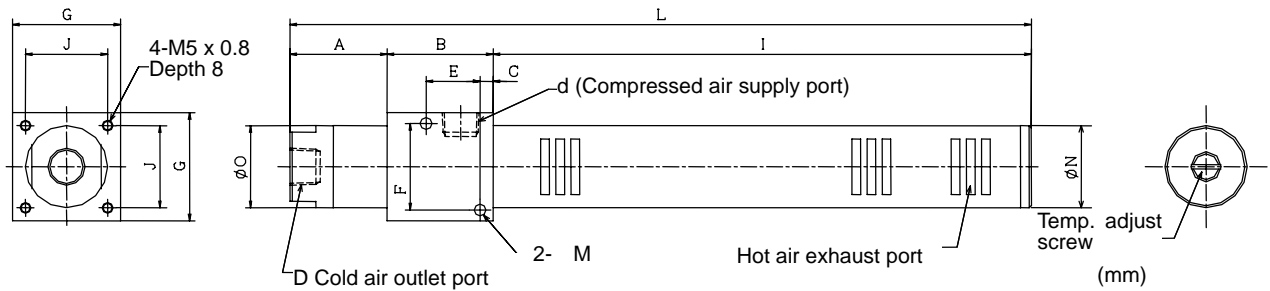
Specifications

Jet Cooler Body					Flexible Hose			Magnet Table		
Model	Air Consumption L/min(ANR)	Working Pres(MPa)	Proof Press (MPa)	Weight (kg)	Conne ction	Nozzle Dia.	Approx. Lenght (mm)	Conne ction	Dimensions W x D x H(mm)	Weight (kg)
BN-VT150N	160	0.2 - 0.5	1.0	0.25	R1/8	6	200	Rc1/4	30 x 39 x 63	0.3
BN-VT300N	375	0.2 - 0.5	1.0	0.45	R1/4	6	200	Rc1/4	30 x 39 x 63	0.3
BN-VT600N	600	0.2 - 0.5	1.0	0.85	R3/8	9	300	Rc3/8	55 x 60 x 97	1.4

* Air consumption is at supply air pressure 0.4MPa. * Length of the flexible hose includes the cold nozzle.

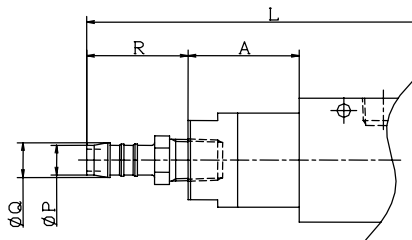
Dimensions

BN-VT150N BN-VT300N BN-VT600N



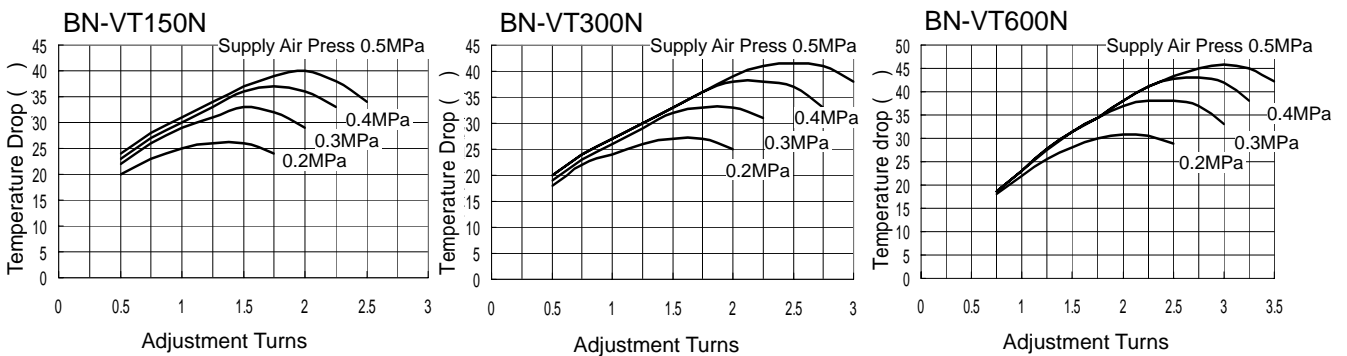
Symbol / Model	A	B	C	d	D	E	F	G	I	J	L	M	N	O
BN-VT150N	26	31	5	Rc1/8	Rc1/8	12	26	35	171	25	228	4.5	25	22
BN-VT300N	31	38	5	Rc1/4	Rc1/4	18	33	40	246	30	315	5.5	30	28
BN-VT600N	45	49	6	Rc3/8	Rc3/8	25	40	50	249	38	343	5.5	38	38

Hose Joint



Symbol / Model	A	L	P (Hose Inner Dia.)	Q	R
BN-VT150N-J	26	262	8	10	34
BN-VT300N-J	31	353	10	12	38
BN-VT600N-J	45	384	12	14	41

Temperature Characteristics



* Temperature Drop: Temperature drop against inlet air. * Adjustment Turns: Number of rotating the adjust screw.



- Please make sure that air filters and regulators are equipped with the air line system.
- For use in cold temperature, use an air dryer to prevent freezing.
- For correct handling, read the instruction manual before installing.

NIHON SEIKI CO., LTD.

Head Office/Plant 2-8 Yogikita, Yao City, Osaka 581-0016 Japan
 TEL. 81-72-923-0481 FAX. 81-72-994-3603
 Osaka Office 2-8 Yogikita, Yao City, Osaka 581-0016 Japan
 TEL. 81-72-923-0481 FAX. 81-72-994-3603
 Tokyo Office 1-16-23 Nakamagome, Ota-ku, Tokyo 140-0027 Japan
 TEL. 81-3-3777-6111 FAX. 81-3-3777-6116
 Nagoya Office 3-2-16 Yoshino, Higashi-ku, Nagoya-City, Aichi 485-0039 Japan
 TEL. 81-52-937-2180 FAX. 81-52-937-2181
 URL: <http://www.nihonseiki.com>

Agency